

SPECIAL TREASURES!



WOOL GATHERING BASKET & SHEARS

Shaped to tuck under the arm for gathering wool caught on fence rows and brambles. Rare!

[TEXTILE]



GINSENG HOE

Fourteen-inch handle and narrow five-inch blade. "Sang" is still dug and sold for enormous prices.

[GARDEN & ORCHARD]



BUNCH REAPER SALESMAN SAMPLE

C. 1900. Rare salesman's sample made to scale with brass & cherry wood.

[MODEL TRACTOR EXHIBIT CASE]



DEEDS WAGON

Deeds was a Nashville wagon company in business until 1912.

[PLANTING / HARVESTING]



BRASS BALANCE

Issued by the Federal Govt. in 1855 as a standard for weights. A handle in the cabinet adjusted and locked the balance, accurate to 1/10,000 of an ounce. The cabinet, with ebony and brass legs, protected the device and kept out drafts that could affect results.

[AG HALL OF FAME]



GOOSE YOKE

Hand-made by a farmer to prevent his goose from slipping through the fence.

[UPSTAIRS: POULTRY EXHIBIT]

∞ NOT TO BE MISSED! ∞



SIDE SADDLE

C. 1890. Made for a woman to ride with both legs on the left side of the saddle instead of riding astride.

[UPSTAIRS:
HARNESS SHOP]



COTTON GIN

C. 1840. Hand-operated gin used to seed and card cotton. Notice beautiful walnut turnings.

[UPSTAIRS: TEXTILE]



CHERRY PITTER OR STONER

Civil War era. Three "grasshopper legs". Rare.

[PRESERVING]



SPINNING WHEEL

C. 1800. Parlor wheel with porcelain knobs, floral decoration and ivory mount. Signed "J. Wilkins".

[UPSTAIRS: TEXTILE]



SEED SAMPLER

Used by the Tenn. Dept. of Agriculture to test seeds for size and moisture content.

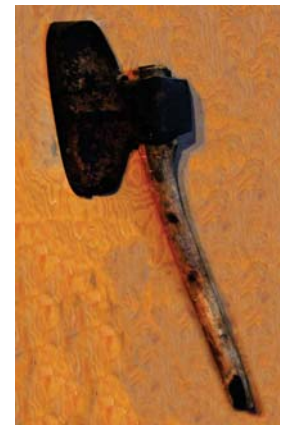
[AG HALL OF FAME]



JIG SAW

Late 19th century. The foot-treadle provided power for cutting delicate and complex designs.

[WOOD WORKING]



BROAD AXE

18th century. Used to square beams for log homes.

[LOGGING]



CROCKS

19th century salt glaze and redware crocks.

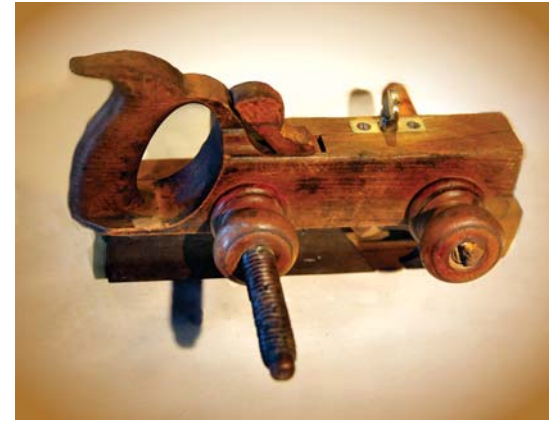
[PRESERVING]



BUTTER WORKER

Used on the plantation or large dairy farm to work out the "blue john" (liquid) from butter. Choice piece!

[DAIRY]



GALLERY OF PLANES

Planes varied in design and use. From simple grooving to the most complicated crown molding work, there were special planes for special jobs.

[WOOD WORKING]



WEAVING LOOM

This barn loom has large hand-hewn beams with "1821" date and "I" initial incised on the cross beam.

[UPSTAIRS: TEXTILE]



CHEESE PRESS

C. 1850. Used to press and remove liquid from cheese curds.

[DAIRY]



FLUTING IRON

Used to pleat or crimp clothing like removable collars and cuffs.

[TEXTILE]

❧ DON'T FORGET TO SEE THESE! ❧



PEA HULLER

“Cracker Jack Pea Thresher,” patented Oct. 10, 1899. Yellow stenciling and original Royal Tiger decal. Peas and vines are embossed on the metal nameplate.

[PRESERVING]



SKATING LANTERNS

C. 1880. These small “Jewel” lanterns were made for a child to hold while gliding over the ice.

[TOY CASE]



BEATEN BISCUIT BRAKE

C. 1850. The biscuit brake was an improvement over beating biscuit dough with a wooden mallet. “300 licks for home folks, 500 for company.” Why were Southern cooks rolling and beating their biscuit dough until it blistered? Before baking powder, the small blisters (air pockets) helped the biscuits rise. Beaten biscuits and country ham are still a Southern treat!

[KITCHEN]



BUTTER CHURNS

Treadle! Rock! Crank! Shake! There were many ways to make fresh butter. Over 2,000 churn patents were registered between 1860 and 1940.

[DAIRY]



FLAX HACKLE

Used to clean and straighten flax fibers before spinning into linen thread. Handmade and initialed “D. H.”

[UPSTAIRS TEXTILE]



POSTAL BUGGY

The “Light Runner” with the original colors, stenciling, American flag decal and battery powered light. Buffalo Springs, Tennessee.

[AG HALL OF FAME]